



1350 Campus Parkway
Neptune, NJ 07753

Non-Profit Org.
U.S. Postage
PAID
Meridian Health

CME

Continuing Medical Education

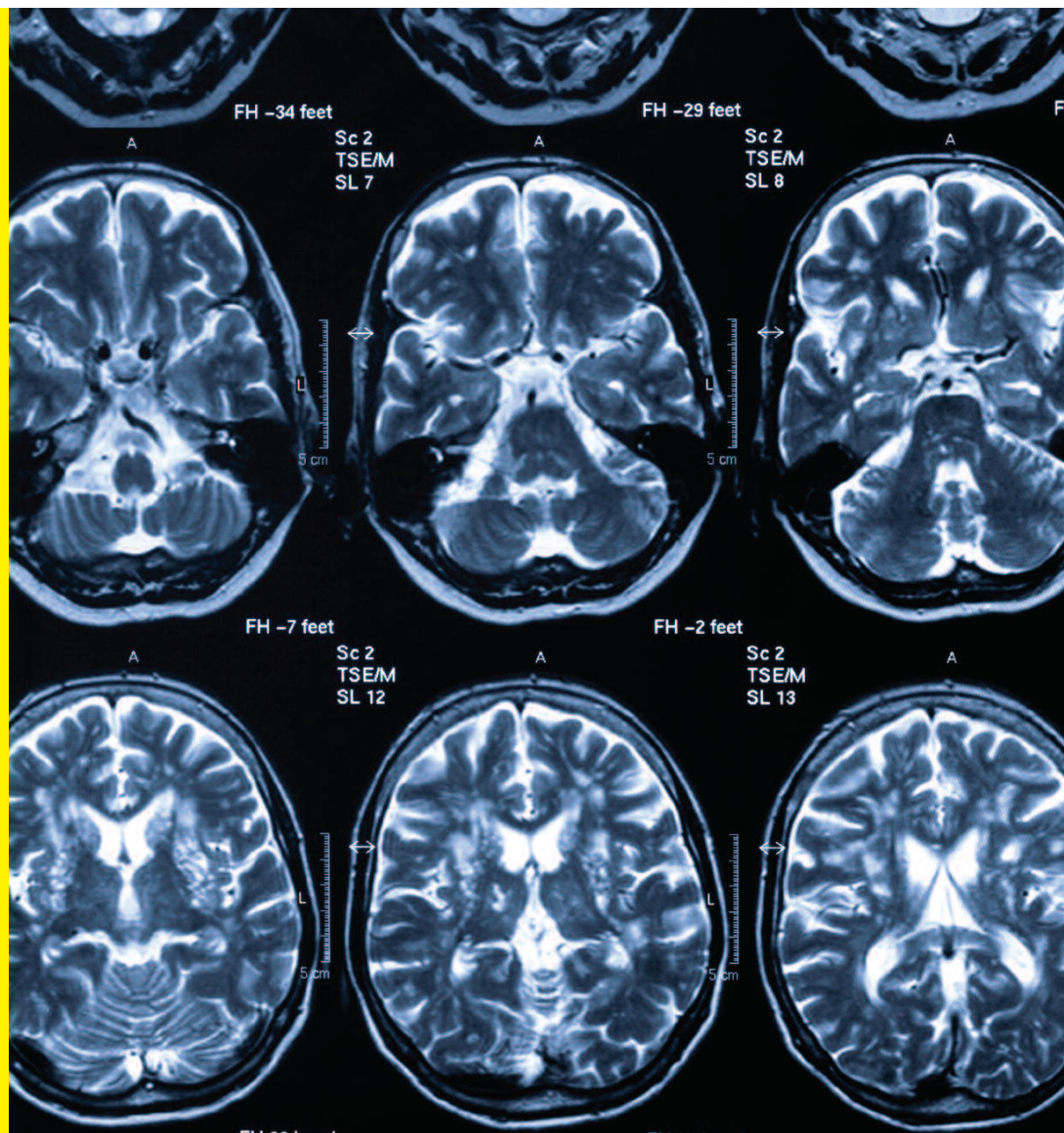


Fourth Annual Meridian Health Stroke Symposium: **Stroke: A Critical Care Approach**

Wednesday, April 17, 2013
7:00 a.m. – 5:00 p.m.

*The Robert Meyner Reception Center at PNC Arts Center
Garden State Parkway, Exit 116, Holmdel, NJ*

Part of Meridian Neuroscience



DESCRIPTION

Meridian Health invites you to the Fourth Annual Stroke Symposium. This continuing educational program will explore emerging trends in the diagnosis and management of patients with cerebral vascular disease across the continuum of care including stroke emergencies, neurocritical care, rehabilitation, stroke prevention and compliance with stroke center standards.

OBJECTIVES

1. Describe traditional and emerging trends to the care of ischemic stroke.
2. Assess, diagnose and manage intracerebral hemorrhage.
3. Explain how a comprehensive understanding of neuroanatomy can improve clinical practice.
4. Demonstrate a prioritized approach to caring for the neurological emergencies.
5. Incorporate evidence based best practices into daily practice in the emergency room, intensive care unit and neuro telemetry unit.

Target Audience

Physicians, Nurse Practitioners, Physician Assistants, Registered Nurses, Rehabilitation Professionals and health care professionals involved in caring for stroke patients.

CME Accreditation Statement

Meridian Health is accredited by the Medical Society of New Jersey to provide continuing medical education for physicians

AMA Credit Designation Statement

Meridian Health designates this live activity for a maximum of 6 *AMA PRA Category 1 Credit(s)*.™ Physicians should claim only the credit commensurate with the extent of their participation in the activity.

Disclosure Statement

Meridian Health, in approving activities for *AMA PRA Category 1 Credit*™, adheres to the ACCME Standards for Commercial Support.™ Meridian Health is responsible for every aspect of the activity it certifies. Faculty and planners in a position to control content are expected to disclose relevant financial commercial relationships related to the activity. If a conflict is identified it is Meridian Health's responsibility to initiate a mechanism to resolve the conflict.

Nursing Disclosure Statement

Meridian Health Department of Clinical Nursing Education is an approved provider of continuing nursing education by NJSNA, an accredited approver by the American Nurses Credentialing Center's COA.

MeridianNeuroscience.com

AGENDA

- 7:00 a.m. – 7:45 a.m. REGISTRATION, CONTINENTAL BREAKFAST & EXHIBITS**
- 7:45 a.m. – 8:00 a.m. Welcome and Introductions**
Stephen Martino, M.D., Medical Director for the Stroke Program, Meridian Neuroscience
- 8:00 a.m. – 8:45 a.m. Stroke in 2013**
Stephen Messé, M.D., Assistant Professor of Neurology, Hospital of the University of Pennsylvania and the Pennsylvania Hospital
- 8:45 a.m. – 9:30 a.m. Functional Neuro-anatomy, Oh that's what it does**
Dai Wai Olsen, Ph.D., R.N., Associate Professor, Department of Neurology and Neurotherapeutics, University of Texas Southwestern
- 9:30 a.m. – 10:15 a.m. Acute Stroke Rescue**
Ronald Benitez, M.D., Director of Stroke Rescue Program at Jersey Shore University Medical Center
- 10:15 a.m. – 10:45 a.m. BREAK/ QUESTIONS & ANSWERS**
- 10:45 a.m. – 11:30 a.m. Stroke and Its Effect on Affect**
Robert Sica, Ph.D., Director of LifeSpan Neuropsychology Rehabilitation Services
- 11:30 a.m. – 12:15 p.m. Nuts and Bolts of Neurocritical Care**
Igor Ugorec, M.D., Director of Neurocritical Care, Overlook Hospital; Associate Professor of Neurology, Weill-Cornell Medical College
- 12:15 p.m. – 1:00 p.m. LUNCH & EXHIBITS**
- 1:00 p.m. – 1:45 p.m. Stroke Paradigms**
Mary Amatangelo, R.N., APN, Department of Neurology, Massachusetts General Hospital; Senior Stroke Researcher, Brigham and Women's Hospital
- 1:45 p.m. – 2:30 p.m. Contemporary Strategies for Intracerebral Hemorrhage**
Aasim Kazmi, M.D., Section Chief of Neurosurgery, Ocean Medical Center, Affiliated with Meridian Neuroscience
- 2:30 p.m. – 2:45 p.m. BREAK & EXHIBITS**
- 2:45 p.m. – 3:30 p.m. Hidden Disabilities After Stroke: Spatial Neglect**
Cristin McKenna, M.D., Ph.D., Kessler Institute for Rehabilitation, Stroke Research Scientist at Kessler Medical Rehabilitation
- 3:30 p.m. – 4:00 p.m. Reanimation After Paralysis: Stroke and Other Causes**
Andrew Elkwood, M.D., Center for Treatment of Paralysis and Reconstructive Nerve Surgery at Jersey Shore University Medical Center
- 4:00 p.m. – 4:30 p.m. Management of Swallowing Disorders After Stroke**
Matthew Kaufman, M.D., Center for Treatment of Paralysis and Reconstructive Nerve Surgery at Jersey Shore University Medical Center
- 4:30 p.m. – 5:00 p.m. QUESTIONS & EVALUATION**

REGISTRATION

Registration Fees (Check appropriate box)

- Physicians: _____ \$135.00
- Non-Meridian Health Professionals (Non-Physician): _____ \$ 85.00
- Meridian Health Professionals (Non-Physician): _____ \$ 75.00

Please make checks payable to: **Meridian Health Stroke Program**
and mail to: **Jackie Dwyer, R.N., MSN, CNRN**
Jersey Shore University Medical Center
Northwest Pavilion 5109
1945 State Route 33, Neptune, NJ 07753

To register and pay with credit card, please call 800.560.9990

Name: _____

Credentials: _____

Affiliated Hospital and Department: _____

Address: _____

E-mail: _____

Phone: _____

For more information, call 732.776.4686 or E-mail JDwyer@MeridianHealth.com